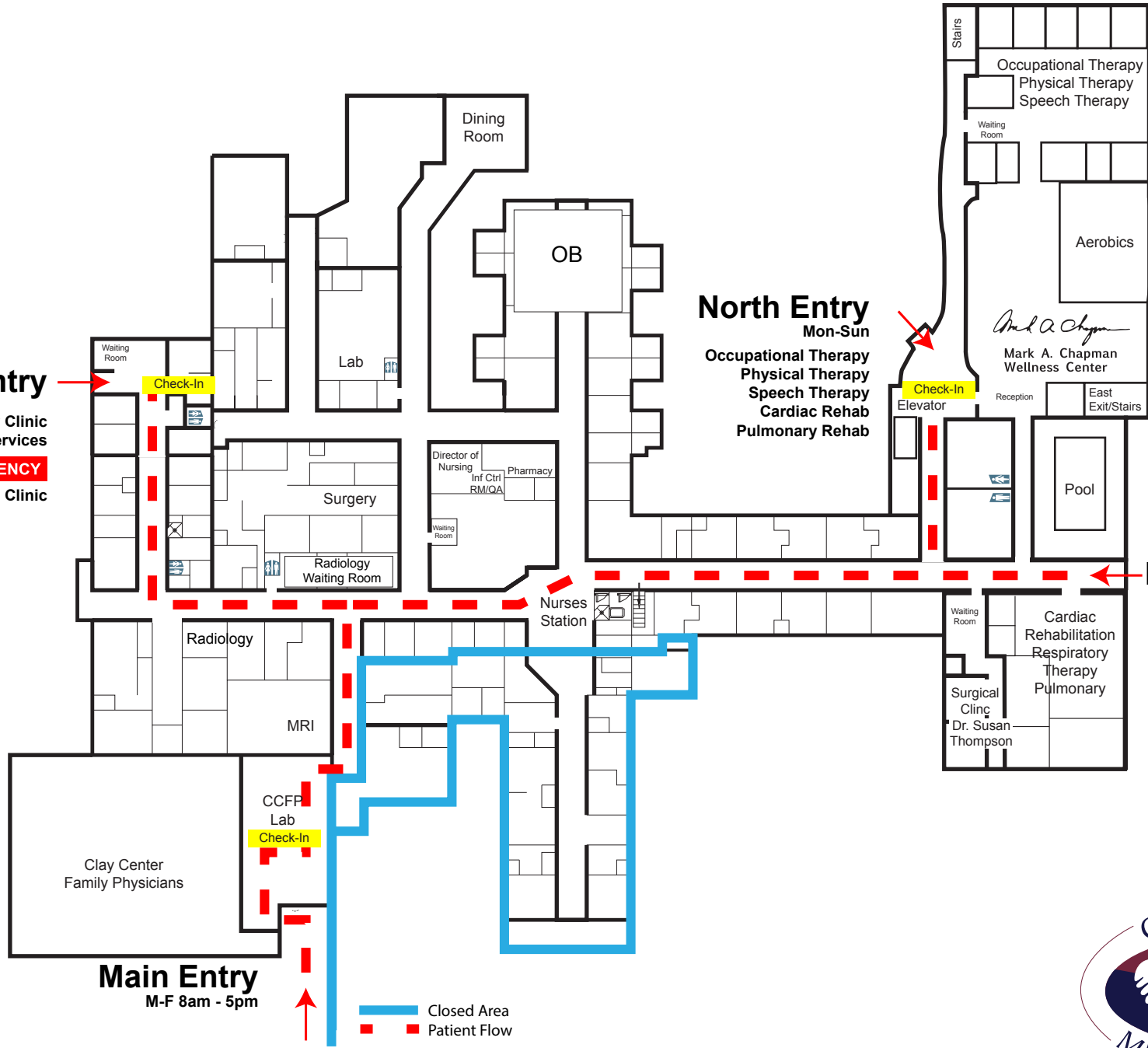


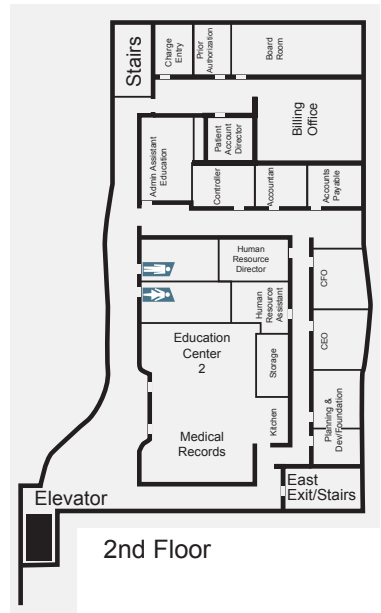
### West Entry

Specialty Clinic  
Outpatient Services  
**+ EMERGENCY**  
Walk-In Clinic



**North Entry**  
Mon-Sun  
Occupational Therapy  
Physical Therapy  
Speech Therapy  
Cardiac Rehab  
Pulmonary Rehab

### East Entry



**Main Entry**  
M-F 8am - 5pm

— Closed Area  
- - Patient Flow

